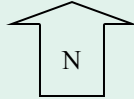
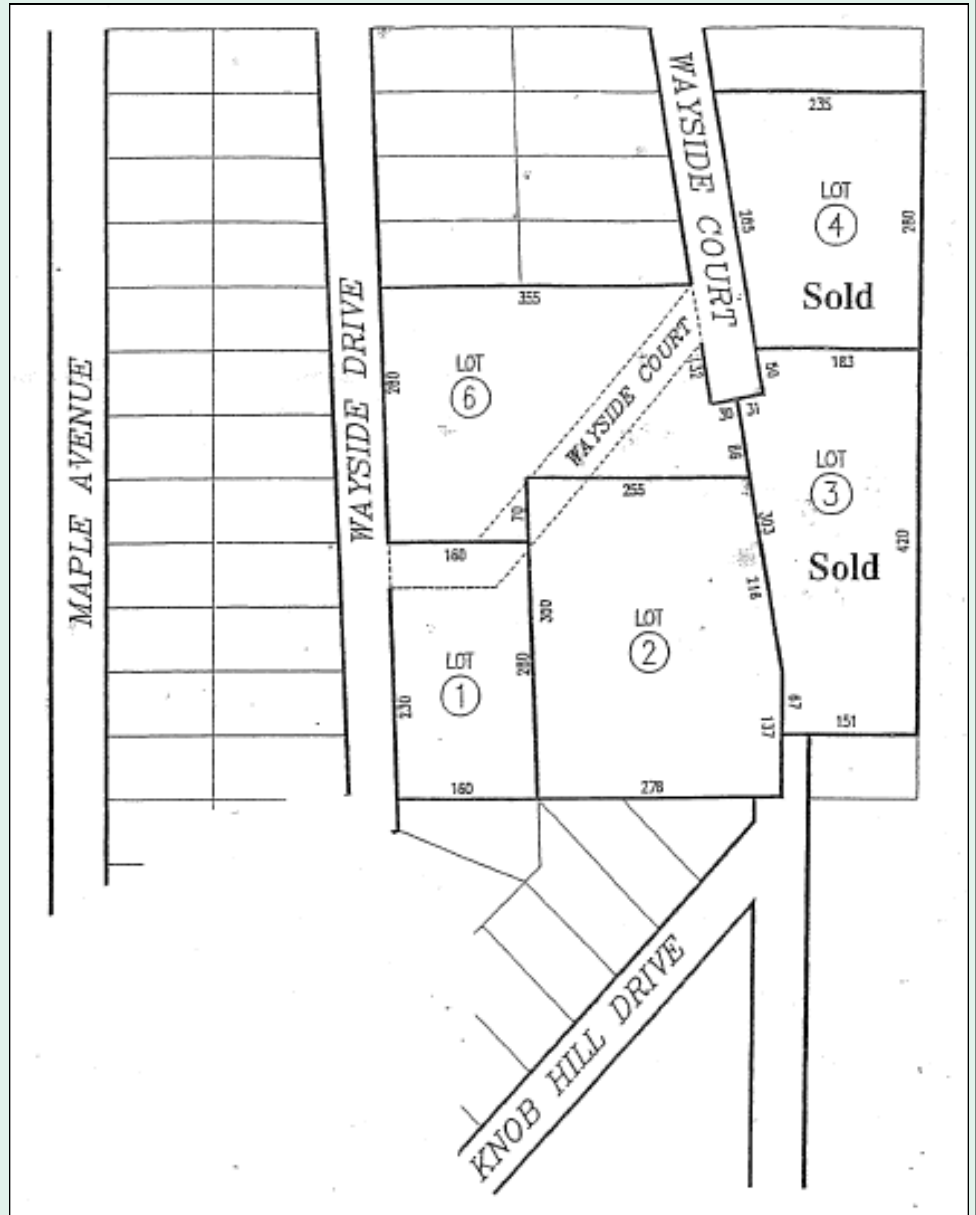


COLUMBIA HILLS ESTATES



WAYSIDE COURT AT COLUMBIA HILLS



For informational
purposes only.
Lot lines
and dimensions
are only
approximate.

For more information contact:



PEGGY HOWELL

Direct: (503) 260-9269

Fax: (503) 543-4855

peggyh@johnlscott.com

www.johnlscott.com/

John L. Scott®

REAL ESTATE

51673 S. Columbia River Hwy

Scappoose, OR 97051

503-543-3751



www.columbiahillsestates.com